



East Sussex Strategic Partnership (ESSP)

2006/07 Annual Report

Changing lives, changing places




A letter from the Chair...

During 2006/7, ESSP began to meet the aspirations that its members and others held for it. We pushed ourselves hard in 2005/6 to draw up an agreement with government over priority targets for the County and at least some of the resources needed to meet them. Before the ink was dry on the agreement we were pitched into delivering to the people of East Sussex the services we had promised to each other we would deliver. However nothing remains static and within months of the start of the year we started to update and improve the agreement for 2007/8.

The services covered by this agreement between ourselves are already making a real difference to people's lives and the communities in which they live. This is due to the commitment and hard work of all and I would like to take this opportunity to thank all those who are partners in ESSP. This annual report highlights some of our successes, and provides links ([blue](#)) to further information.

There are challenges ahead, such as increasing affordable housing and improving educational attainment amongst young people. We have put in place a range of initiatives to tackle these, and the other issues which are of greatest concern to local people.

Before I sign off, I would like to thank my predecessor, Ian Chisnall, for his expert guidance as Chair of the Partnership over the past three years.



Jeremy Leggett
Chair, East Sussex Strategic Partnership

Our achievements

Staying in focus

Since its launch in 2003, the [Pride of Place Community Strategy](#) has been reviewed and updated to make sure it continues to reflect the needs and wants of local people. In February 2007 ESSP agreed to develop a single integrated countywide community strategy with all the district and borough strategic partnerships. The new strategy will set out local people's ambitions for the kind of county they want East Sussex to be in 2026, and highlight the priorities we need to focus on to achieve that vision. These priorities will form the basis of a new Local Area Agreement (LAA).

Building the partnership

This year was largely about developing relationships amongst partners and setting up the systems and processes we needed to deliver the community strategy action plan (the '[Local Area Agreement](#)'). Detailed plans were produced for every service to be delivered, steering groups were set up to oversee delivery, and arrangements were put in place to help us monitor our performance against our 2006/07 targets.

Delivering results

2006/07 was the first year of our three-year Local Area Agreement and we lost no time in working towards our [23 long-term goals](#), including protecting children and young people from harm and neglect, improving the independence, health and wellbeing of our residents, increasing economic activity and reducing crime. The following pages give you a flavour of our achievements during the year.

Investing in services

During 2006-2007 partners received a total of £13,296,000 of funding (in addition to mainstream resources) through the LAA. The funding has been spent on 'high priority' joint services across our four [key themes](#): children and young people; healthier communities and older people; economic development and enterprise and safer and stronger communities. ESSP also commissioned a new [website](#), the focal point for information and services for partners and others involved in community planning in East Sussex.

Children and Young People

Staying safe

Fewer children are victims of crime, thanks to a range of preventative work such as the Youth Development Service and Under 19's Substance Misuse Service work in hotspot areas, test purchasing at licensed premises, personal safety and substance misuse topics delivered in schools through the Sussex Police 'Inspire' Education programme.

Being healthy

In the last year, 101 schools across East Sussex achieved Healthy School status, and all high free school meals (FSM) schools are working towards the award. Healthy schools provide better health and emotional well-being for all children and young people by equipping pupils with the skills and information they need to make informed decisions about their health.

Enjoying and achieving

2,629 childcare places were available during the year, 538 more than last year; and fewer secondary school children in Hastings are missing out on their education as the number of days lost through fixed term exclusions was cut by over 20% compared with 2004/5.

Influencing decisions

Good partnerships are developing between the Children's Trust partners to increase and improve activities for young people, and there is real commitment from partners to promote young people's participation in developing services, such as the 'emotimapping' consultations in Peacehaven and Hollington.



"Participation has benefited from the increased commitment of partners to support young people in shaping the services that affect them. From a young person's perspective, this results in more efficient and effective, user-focused services." Brendan McGowan, Unite Participation

Healthier Communities and Older People

"Partnership working on the LAA has benefited the NHS by providing a focus for our contribution to improving all outcomes for our population. In general, health staff are clearer about how their individual activities with patients and users of services add to the overall positive improvements in each target area." Alison Smith, Hastings and Rother PCT



Keeping you on your feet

A new mobile response service was launched to help people who fall in their home. The service is being trialled in Eastbourne but there are plans to extend it county-wide if it is successful. Created with Local Area Agreement 'pump priming' money, the service is having a positive impact with a 7% reduction in the number of ambulance call outs to people who have fallen.

Keeping you warm

2,538 households across the county were kept warm this winter through an increase in the take up of grants towards household fuel bills. These results, made possible through improved partnership working between local councils, the Benefits Agency, East Sussex Healthy Homes Project, Primary Care Trusts and community organisations, are very pleasing particularly given the increase in fuel prices over the year, but fuel poverty remains an issue in East Sussex.

Helping older people stay independent

14,034 people received services during the year that enabled them to live independently at home, 3,839 more than in 2004/05. Links have also been made between key services such as telecare and East Sussex Fire and Rescue Service which will help ensure more services in the coming year.

Supporting carers

East Sussex Safer Communities Team, East Sussex Downs and Weald PCT and Care for the Carers joined forces to set up a support group for anyone who cares for family and friends with drug or alcohol problems. Meanwhile, our partners worked with schools and other service providers to identify 216 young carers who were then provided with support. Four new after school groups were set up across the county using children's fund monies and a multi-agency young carer's strategy group was established.

Economic Development and Enterprise

Training our workforce

During the year 5,545 adults enrolled in training with the support of their employers – 1,362 more than two years ago, and more employers were satisfied with the training their employers received.

Supporting new businesses

250 new businesses set up in Eastbourne during the year, and 175 set up in Hastings. Targeted activity in Hastings through the Local Enterprise Growth Initiative, enterprise hub and the new enterprise gateway makes it probable that the numbers of businesses in those areas will continue to increase.

Bringing empty properties back into use

Work by local authorities across East Sussex to develop an East Sussex Empty Homes Strategy attracted interest from other local authorities. As a result, a pan-Sussex Empty Property working group was established to develop a pan-Sussex (East & West) and Brighton & Hove Empty Property Strategy.

Housing the homeless

557 people were provided accommodation which prevented them from becoming homeless, a 21% increase across the county since 2005/6 and there was a significant reduction in homelessness during the year, with 648 homeless people registered, a reduction of 703 (52%) on 2005/6.

Photo courtesy of SEEDA



“Partnership working has led to closer links with other agencies across the county ensuring greater coherence with our overall aims and objectives. There is also tangible evidence that more and more organisations value, recognise and support the educational needs of all learners”. Wayne Wright, Learning & Skills Council, Sussex

Safer and Stronger Communities

Reducing crime

Injury related violent crime over the weekends was down by 13.3% on last year thanks to a range of initiatives including partnership working through the Licensing Enforcement Group, Pub Watch/Night Watch schemes, Operation Marble (which tackles anti social behaviour and alcohol fuelled crime), and joint work through Operation Cobra which identifies locations with high levels of Public Place Violent Crime.

Supporting adults, protecting children

5,711 domestic violence incidents were reported during the year, exceeding the target by 361 (6.7%), and an estimated 1,544 people participated in drug treatment programmes, (327 (26.8%) more than targeted for the year).

Greener and cleaner

All the local authorities in the county have continued to develop and promote waste reduction, re-use and recycling services resulting in an estimated 2,018 tonnes less non biodegradable waste going to landfill than targeted.

Encouraging volunteering

A film featuring volunteers from across East Sussex was launched to encourage people to volunteer. It follows a county-wide survey held earlier in the year to discover why people do or don't volunteer.

"Working together the five Crime and Disorder Reduction Partnerships in East Sussex are producing some remarkable reductions in crime. The most note worthy are the Joint Action Groups where identified hotspots of trouble are sorted out by the most appropriate partner". Councillor Bob Tidy, East Sussex Safer Communities Steering Group



Narrowing the Gap

Many people in Hastings suffer from “postcode deprivation” which Neighbourhood Renewal Funding is designed to address. Work to narrow the gap between these most deprived neighbourhoods and the rest of the town includes:

Children & Young People

Undergraduate mentors helped 174 young people to prepare for their GCSEs examinations, offering practical support and nourishment for their aspirations. 65 primary school children and their families worked with Inclusive Learning Tutors to ensure best behaviour and achievement, and reduce exclusions from school. Over 1400 local young people participated in a variety of positive activities to address anti-social behaviour and 999 benefited from additional support.

Healthier Communities & Older People

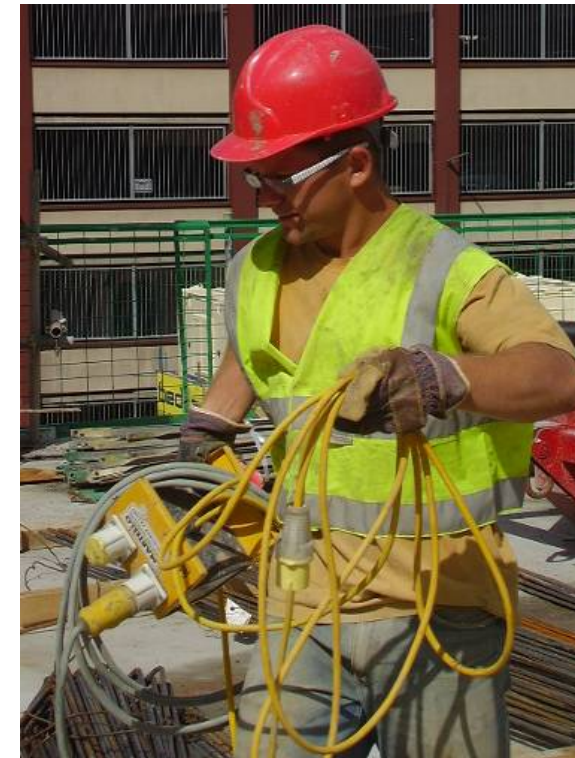
The Smoking Cessation Outreach service assisted 699 people living in Hastings’ most deprived areas to stop smoking, more than doubling the number since 2004/05.

Economic Development & Enterprise

An initiative to equip people living in areas with the highest unemployment levels with construction skills trained 17 people in a new training centre. This work is part of the Hastings Thriving Construction Initiative which helps local people benefit from job opportunities arising through the construction work planned for Hastings.

Safer & Stronger Communities

Crime reduction activities included work with 39 of the most prolific offenders on their release from prison, providing, and installing security hardware in 338 houses vulnerable to burglary. 89 young people took part in a restorative justice programme in order to understand the consequences of their actions and prevent further offending.



East Sussex Strategic Partnership

East Sussex Strategic Partnership (ESSP) was set up in 2000 to help organisations work together in a coordinated way to plan local services and tackle the issues that matter to local people.

Our main tasks are to develop and deliver the [East Sussex Community Strategy](#), a long-term plan for improving quality of life for those living and working in East Sussex; and to deliver the East Sussex [Local Area Agreement](#), a three year action plan covering 'high priority' services for children and young people; healthier communities and older people; economic development and enterprise and safer and stronger communities.

ESSP monitors its performance by collecting and analysing information from partners involved in delivering services. We use this information to produce performance reports which we publish data on our website. Read our latest [performance report](#).

ESSP works closely with the five District and Borough [Local Strategic Partnerships in East Sussex](#), and provides leadership on county-wide issues.

Find our more... and get involved!

To find out more about ESSP and to access a range of information, including meeting papers, reports, publications and information about consultation please [visit our website](#) or contact us:

Telephone: 01273 481177

Email: essp@eastsussex.gov.uk

Website: www.essp.org.uk

Postal address and office:

East Sussex Strategic Partnership
County Hall, St Anne's Crescent,
LEWES
East Sussex BN7 1UE